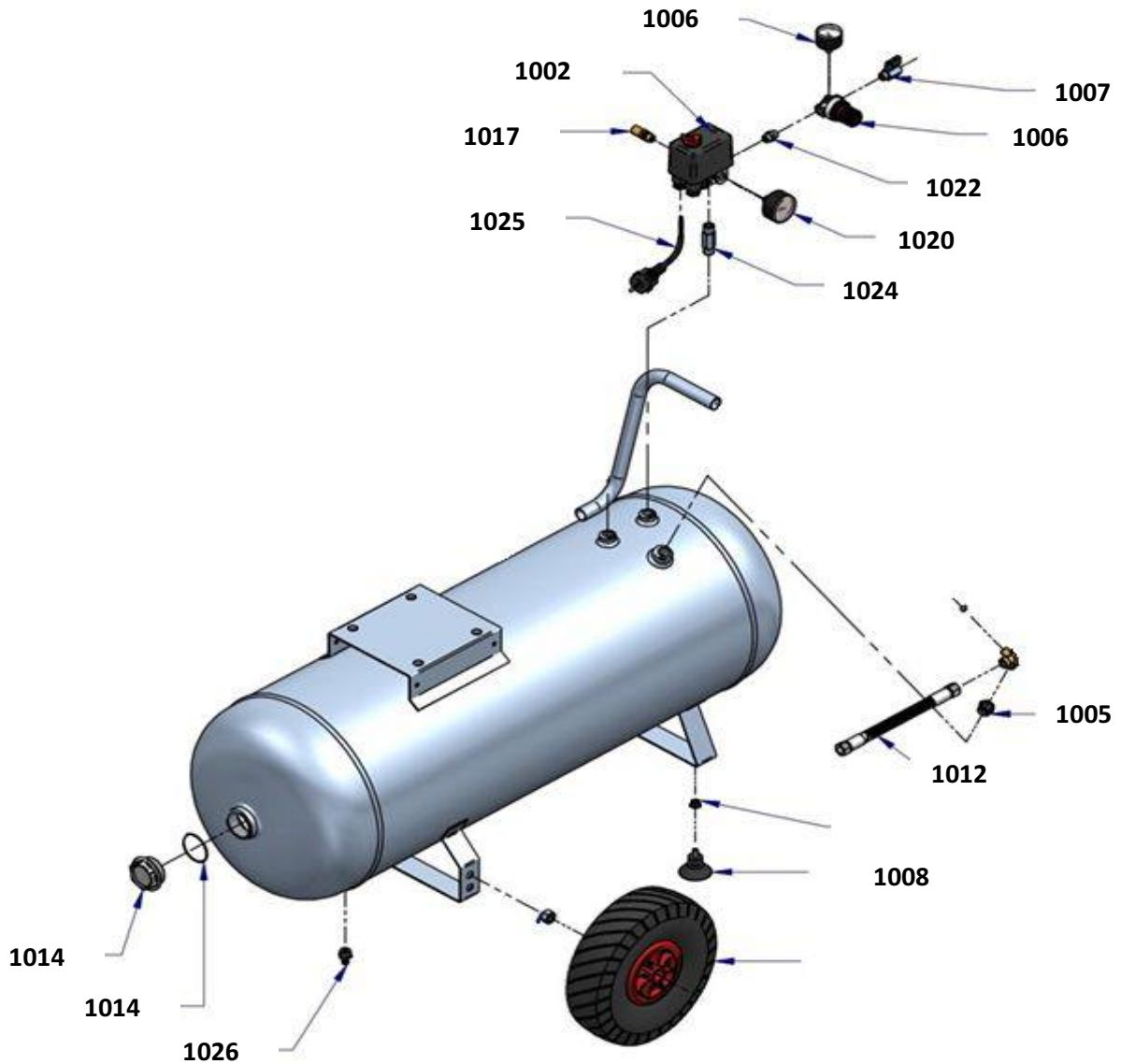


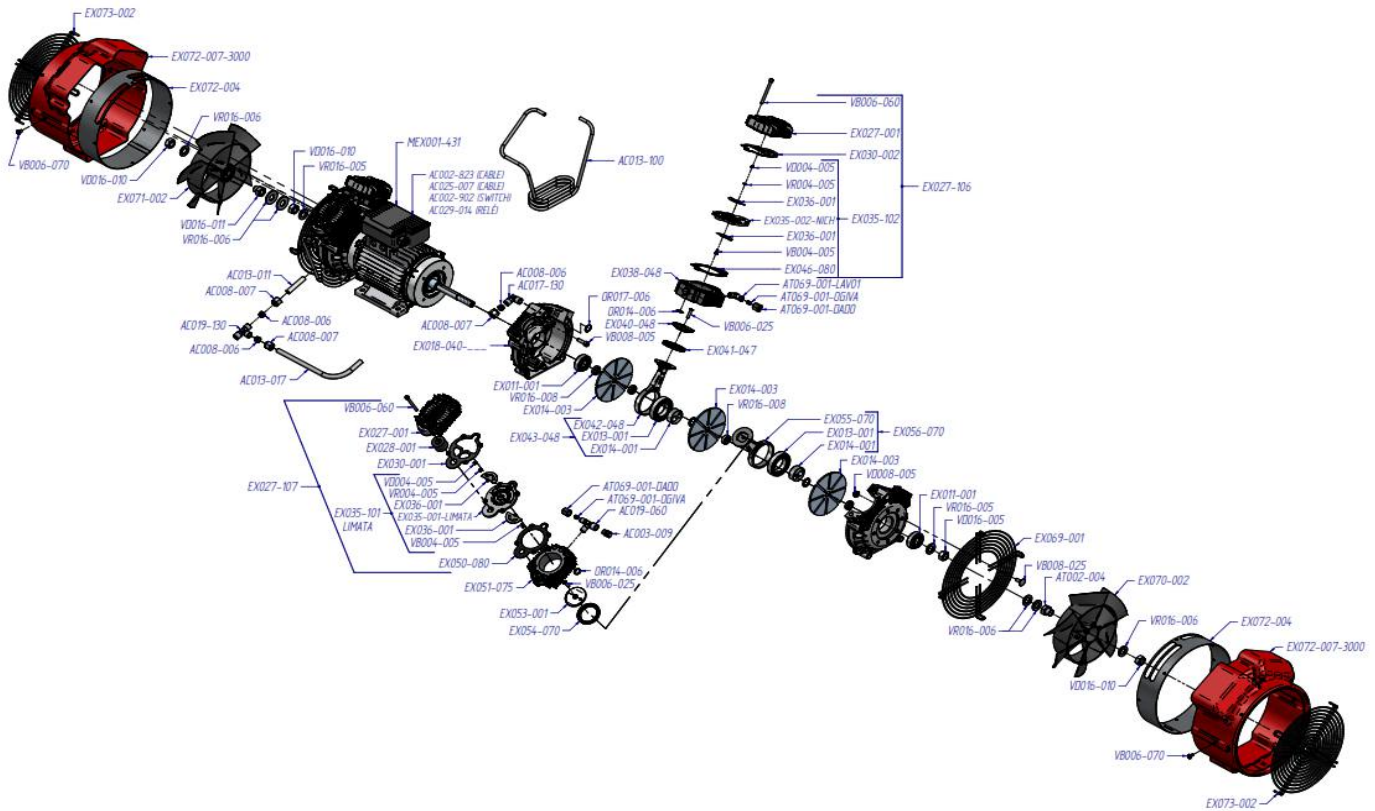
Gerätecode: 25103902  
 Artikelnummer: 25103902  
 Gerätetyp: Aerotec EXTREME 260-60-15



| POS  | Beschreibung  | Code           | Preis |
|------|---|----------------|-------|
| 1001 | Aggregat komplett mit Motor EXTREME 21bar                   | 25501214       |       |
| 1002 | Betriebsstundenzähler 400 V zu CONDOR Druckschalter         | 1089067146-PS  |       |
| 1003 | Condor Drucksch. MDR3/400V/6 3-10A/                         | 12800270-PS    |       |
| 1004 | Kugelhahn 1/2 Zoll IG-AG ECO                                | 9047005-PS     |       |
| 1005 | Rilsanwinkel Winkelstück 90 ° Stahl f.Rückschlagventile uni | 011747100-PS   |       |
| 1006 | AEROTEC Filter Druckregler FX 3230 1/2 Z                    | 25490213       |       |
| 1007 | Aerotec EASY SAVE PRO 1/2 Zoll AG Sicherheitskupplung       | 25730082       |       |
| 1008 | Schwingungsdämpfer KIT f. Großanlagen Inhalt 4 Stück        | 25590002       |       |
| 1009 | Druckschlalterteil Konterverschraubung 3                    | 9053294-PS     |       |
| 1010 | Konterverschraubung Kesselteil 3/8 IG- 1/2 AG f.            | 9053325-PS     |       |
| 1011 | Überwurfmutter 1/2 Zoll zu Konterverschr                    | 9053485-PS     |       |
| 1012 | TUBO FLX 3/8 BSP FD+F90 L350                                | 151PK0009      |       |
| 1013 | Reduzierung 2 Zoll AG zylindrisch x 1/2 Zoll IG - Stahl,    | 50.1024.124-PS |       |
| 1014 | Verschlussstopfen 2 Zoll                                    | 2200750911-PS  |       |
| 1015 | Zylindrischer Doppelnippel 1/4 Zoll x 1                     | 10.133.87-PS   |       |
| 1016 | Winkelstück IG x AG 1/4 Zoll                                | 20.502.03-PS   |       |
| 1017 | Überdruckventil 15 bar - 3/8 Zoll AG                        | 9049016-PS     |       |
| 1018 | Reduziernippel 3/8 Zoll IG x 1/4 Zoll AG                    | 10.137.95-PS   |       |
| 1019 | Doppelnippel. Verlängerung zu Druckschalt. 3/8 Zoll         | 9414365-PS     |       |
| 1020 | Manometer 15 bar 50 mm 1/4 Zoll AG hinten                   | 9052063-PS     |       |
| 1021 | Rückschlagventil 3/8 Zoll - 10 mm Rohr                      | 4101052-PS     |       |
| 1022 | Zylindrische Reduzierung 1/2 Zoll AG x 3/8 IG               | 20.208.06-PS   |       |

|      |  |              |  |
|------|--|--------------|--|
| 1023 | Schwingungsdämpfer für Aggregat Extreme            | AC009-520-PS |  |
| 1024 | Verlängerung 3/8 Zoll 170 mm länge Kondensatablass | 199000031-PS |  |
| 1025 | Kabel 4x1 5x 3 M - MIT CEE 5-pl Stecker            | 2506210-PS   |  |
| 1026 | Kugelhahn 3/8 Zoll AG-IG- ECO                      | 9047052KH-PS |  |
| 1027 | Muffe 3/8 Zoll                                     | 20.300.04-PS |  |
| 1028 | Winkelstück IG x AG 3/8 Zoll                       | 20.502.04-PS |  |
| 1029 | Druckluftkessel 60 L liegend verzinkt - 15 bar     | 25500199     |  |
| 1030 | Rilsanschlauch 4/6 PTFE TEFLON 1 Meter             | 9270006T-PS  |  |

## Zylinderkopfschraubenmit 10 NM nachziehen !!



| POS              | Beschreibung          | Code             | Preis |
|------------------|-----------------------|------------------|-------|
| AC002-823        | Cable                 | AC002-823        |       |
| AC002-902        | Switch                | AC002-902        |       |
| AC003-009        | Safety valve          | AC003-009        |       |
| AC008-006        | Ogive                 | AC008-006        |       |
| AC008-007        | Nut                   | AC008-007        |       |
| AC013-011        | Tube                  | AC013-011        |       |
| AC013-017        | Tube                  | AC013-017        |       |
| AC013-100        | Tube                  | AC013-100        |       |
| AC017-130        | Pipe fitting          | AC017-130        |       |
| AC019-060        | Pipe fitting "T"      | AC019-060        |       |
| AC019-130        | Pipe fitting "T"      | AC019-130        |       |
| AC025-007        | Cable                 | AC025-007        |       |
| AC029-014        | Relè                  | AC029-014        |       |
| AT002-004        | Right fan nut         | AT002-004        |       |
| AT069-001-DADO   | Nut                   | AT069-001-DADO   |       |
| AT069-001-LAV01  | Pipe fitting          | AT069-001-LAV01  |       |
| AT069-001-OGIVA  | Ogive                 | AT069-001-OGIVA  |       |
| EX011-001        | Bearing               | EX011-001        |       |
| EX013-001        | Bearing               | EX013-001        |       |
| EX014-001        | Eccentric             | EX014-001        |       |
| EX014-003        | Counterweight         | EX014-003        |       |
| EX018-040-       | Monoblock side        | EX018-040-       |       |
| EX027-001        | Stage head            | EX027-001        |       |
| EX027-106        | Assembled head        | EX027-106        |       |
| EX027-107        | Assembled head        | EX027-107        |       |
| EX028-001        | Inlet filter          | EX028-001        |       |
| EX030-001        | Gasket                | EX030-001        |       |
| EX030-002        | Gasket                | EX030-002        |       |
| EX035-001-LIMATA | Valve plate           | EX035-001-LIMATA |       |
| EX035-002-NICH   | Valve plate           | EX035-002-NICH   |       |
| EX035-101-LIMATA | Assembled valve plate | EX035-101-LIMATA |       |
| EX035-102        | Assembled valve plate | EX035-102        |       |

|                |                          |                |  |
|----------------|--------------------------|----------------|--|
| EX036-001      | Valve lamella            | EX036-001      |  |
| EX038-048      | 2nd stage cylinder       | EX038-048      |  |
| EX040-048      | Connecting rod disk      | EX040-048      |  |
| EX041-047      | Piston seal 2nd stage    | EX041-047      |  |
| EX042-048      | Connecting rod           | EX042-048      |  |
| EX043-048      | Assembled connecting rod | EX043-048      |  |
| EX046-080      | Gasket                   | EX046-080      |  |
| EX050-080      | Gasket                   | EX050-080      |  |
| EX051-075      | 1st stage cylinder       | EX051-075      |  |
| EX053-001      | Connecting rod disk      | EX053-001      |  |
| EX054-070      | Piston seal 1st stage    | EX054-070      |  |
| EX055-070      | Connecting rod           | EX055-070      |  |
| EX056-070      | Assembled connecting rod | EX056-070      |  |
| EX069-001      | Back fan grid            | EX069-001      |  |
| EX070-002      | Right fan                | EX070-002      |  |
| EX071-002      | Left fan                 | EX071-002      |  |
| EX072-004      | Metal inside cover fan   | EX072-004      |  |
| EX072-007-3000 | Cover fan                | EX072-007-3000 |  |
| EX073-002      | Front fan grid           | EX073-002      |  |
| MEX001-431     | Motor                    | MEX001-431     |  |
| OR014-006      | O-ring                   | OR014-006      |  |
| OR017-006      | O-ring                   | OR017-006      |  |
| VB004-005      | Screw                    | VB004-005      |  |
| VB006-025      | Screw                    | VB006-025      |  |
| VB006-060      | Screw                    | VB006-060      |  |
| VB006-070      | Screw                    | VB006-070      |  |
| VB008-005      | Screw                    | VB008-005      |  |
| VB008-025      | Screw                    | VB008-025      |  |
| VD004-005      | Nut                      | VD004-005      |  |
| VD008-005      | Nut                      | VD008-005      |  |
| VD016-005      | Nut                      | VD016-005      |  |
| VD016-010      | Right fan nut            | VD016-010      |  |
| VD016-011      | Left fan nut             | VD016-011      |  |
| VR004-005      | Washer                   | VR004-005      |  |
| VR016-005      | Washer                   | VR016-005      |  |
| VR016-006      | Washer                   | VR016-006      |  |
| VR016-008      | Washer                   | VR016-008      |  |